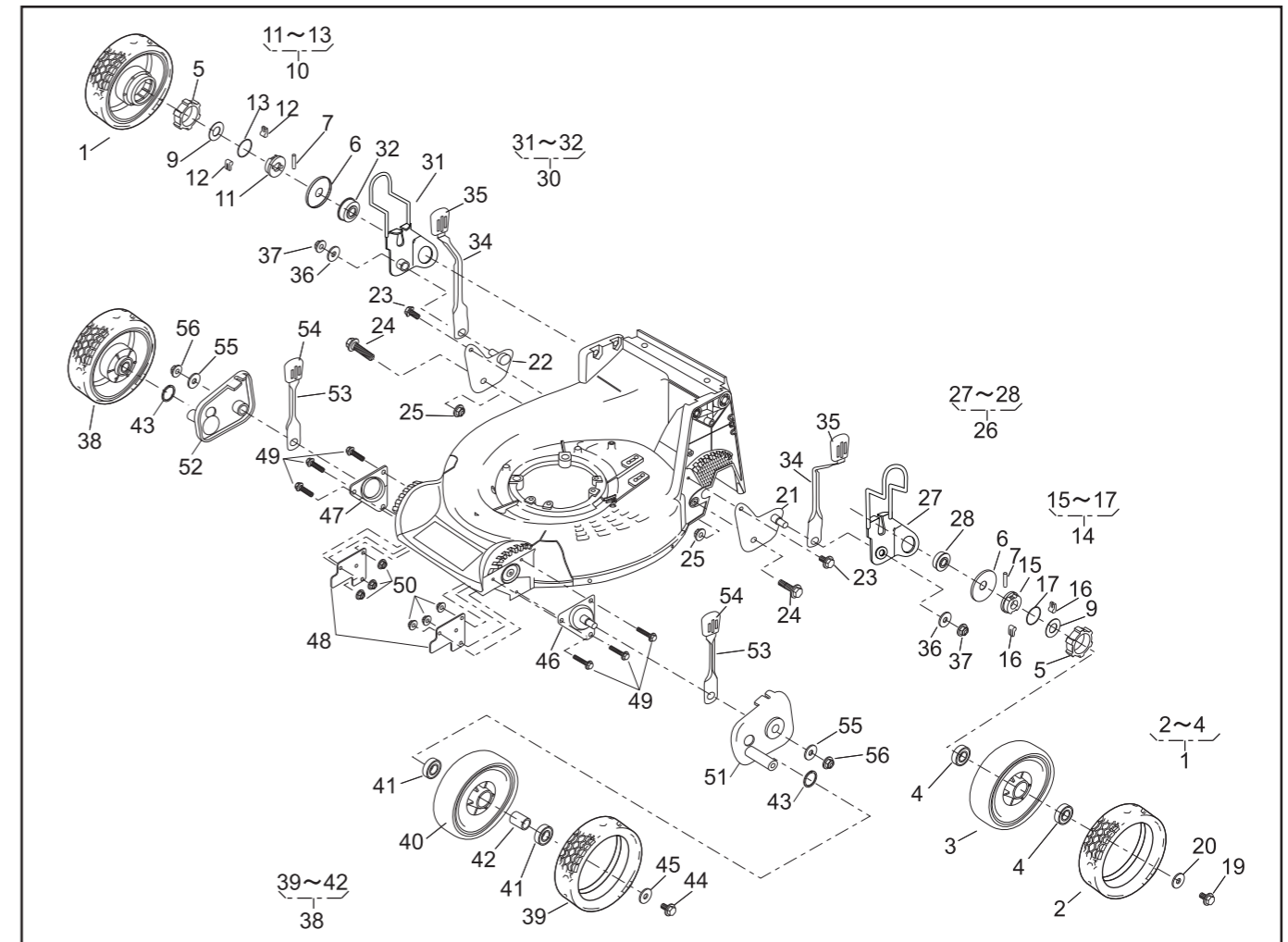


PARTS LIST

46014-224

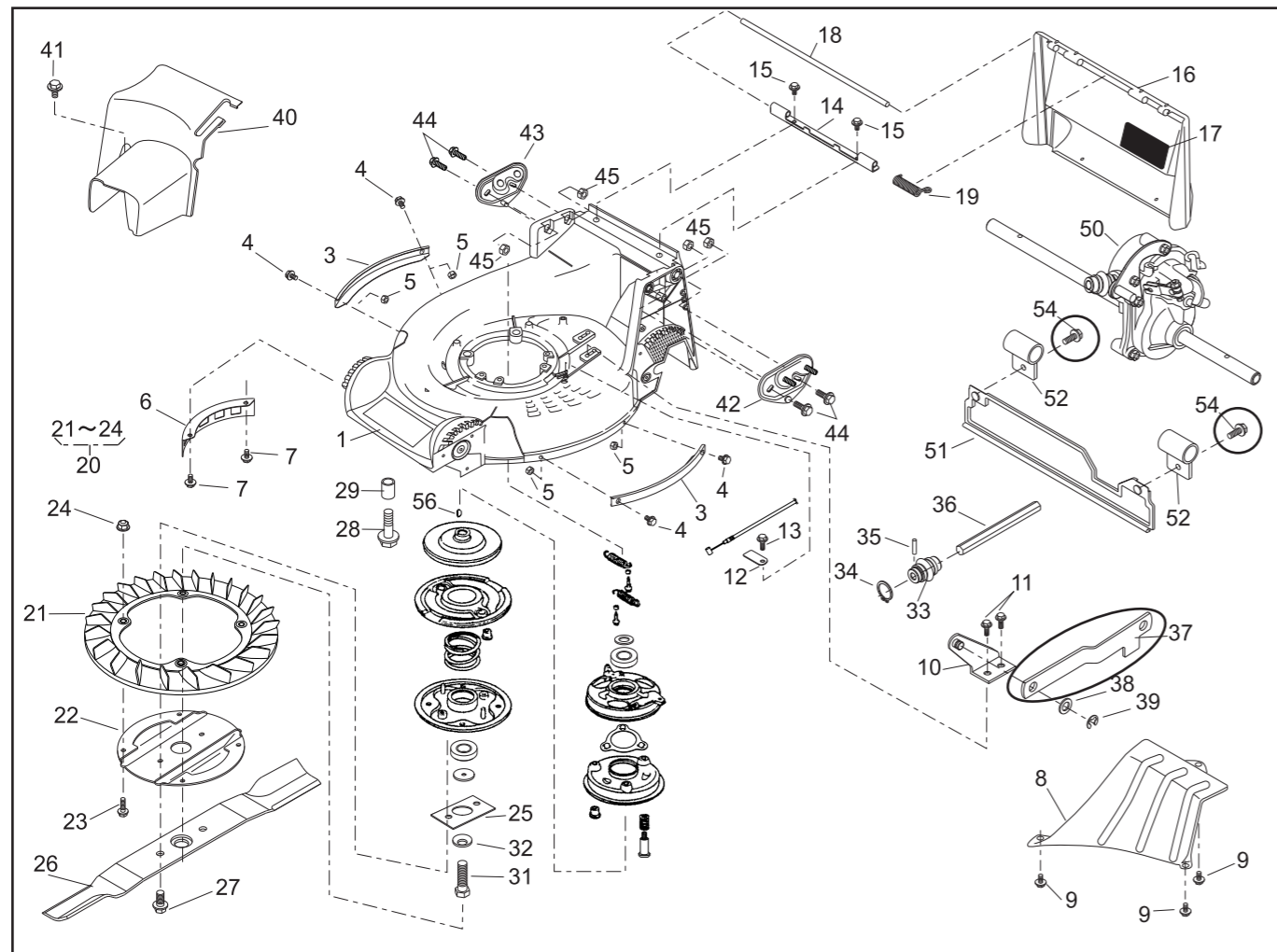
REF. No.	PARTS No.		PARTS NAME	8"AI-WHEEL		PRICE()	RECOMM.(%) Lot.100	REMARKS
				Q'TY	INCLUDING			
1	71041	136	WHEEL ASSY(A.W.)	2				
2	91086	113	TIRE	2				
3			WHEEL	2				
4	916B	6002	BEARING	4				
5	11086	119	STOPPER	2				
6	61003	112	THRUST PLATE	2				
7	31034	137	PIN	2				
8								
9	68036	146	WASHER	2				
10	71158	101	RATCHET ASSY(R)	1				
11	11102	138	HOLDER	1				
12	31034	170	PIN	2				
13	68013	266	SPRING	1				
14	71158	102	RATCHET ASSY(L)	1				
15	11102	138	HOLDER	1				
16	31034	170	PIN	2				
17	68013	266	SPRING	1				
18								
19	31057	181	HEXAGON BOLT	2				
20	68036	101	WASHER	2				
21	11006	151	STAY C.P.(RL)	1				
22	11006	152	STAY C.P.(RR)	1				
23	342L	0612	FLANGE BOLT TAPPING	2				
24	31057	255	HEXAGON BOLT	2				
25	569L	0800	FLANGE NYLON NUT	2				
26	71122	112	ADJUSTER ASSY(L)	1				
27	11142	131	ADJUSTER(RL)	1				
28	945L	0349	BEARING	1				



PARTS LIST

46014-224

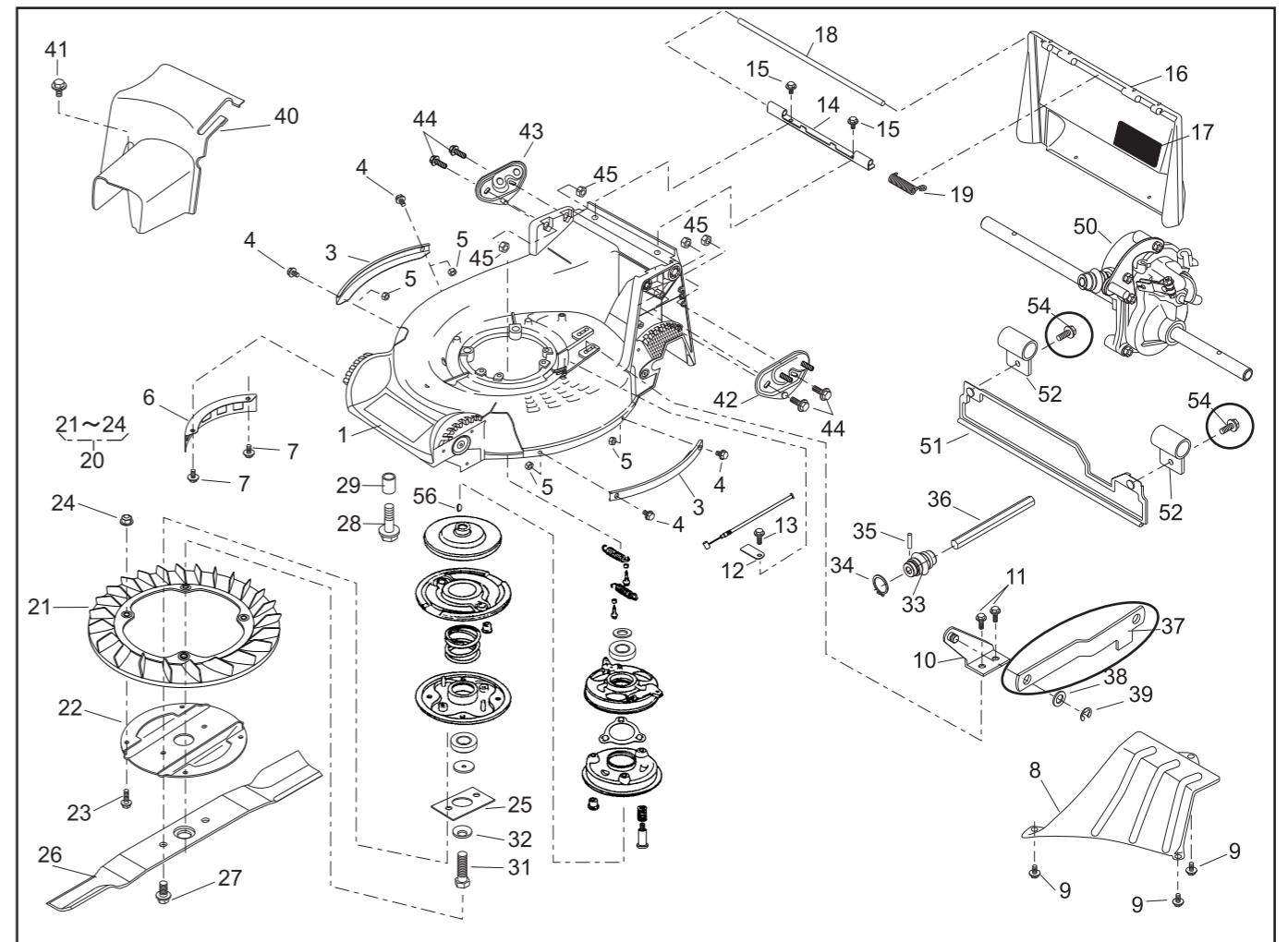
REF. No.	PARTS No.		PARTS NAME	8"AI-WHEEL		PRICE()	RECOMM.(%) Lot.100	REMARKS
				Q'TY	INCLUDING			
29								
30	71122	113	ADJUSTER ASSY(R)	1				
31	11142	132	ADJUSTER(RR)	1				
32	945L	0349	BEARING	1				
33								
34	11150	105 09	ADJUST LEVER	2				
35	36061	121	KNOB	2				
36	613L	0800	WASHER	2				
37	569L	0800	FLANGE NYLON NUT	2				
38	71041	135	WHEEL ASSY(A.W.)	2				
39	91086	113	TIRE	2				
40			WHEEL	2				
41	916B	6002	BEARING	4				
42	11083	332	COLLAR	2				
43	51113	119	RING	2				
44	31057	181	HEXAGON BOLT	2				
45	68036	101	WASHER	2				
46	11006	153	STAY C.P.(FL)	1				
47	11006	154	STAY C.P.(FR)	1				
48	11113	409	STAY	2				
49	335L	0625	FLANGE BOLT	6				
50	569L	0600	FLANGE NYLON NUT	6				
51	11142	129	ADJUSTER(FL)	1				
52	11142	130	ADJUSTER(FR)	1				
53	11150	106 09	ADJUST LEVER	2				
54	36061	121	KNOB	2				
55	613L	0800	WASHER	2				
56	569L	0800	FLANGE NYLON NUT	2				



PARTS LIST

46014-234-03

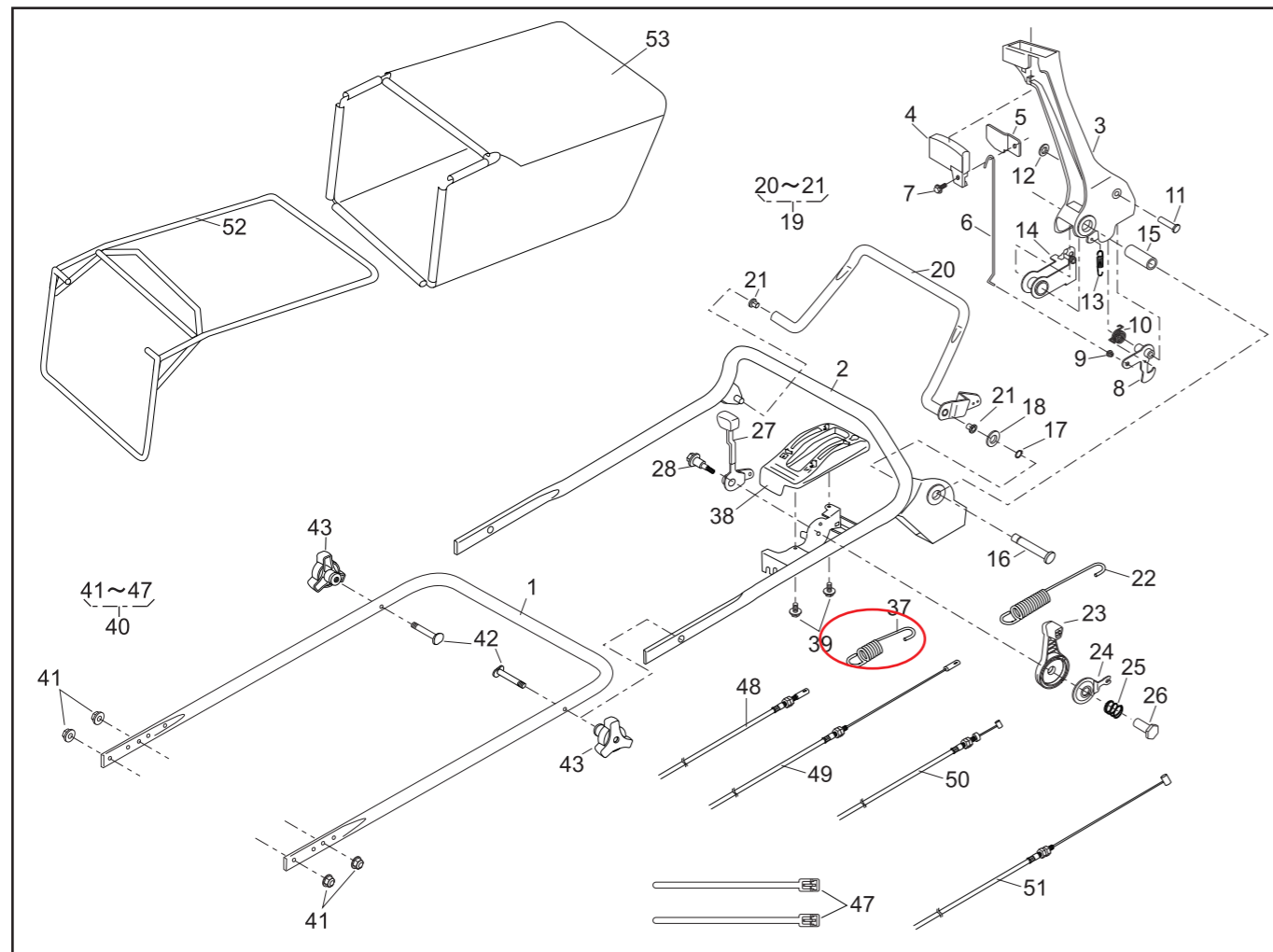
NOTE	REF. No.	PARTS No.	PARTS NAME	GRASS-CUTTING		1/2	Feb.09,2005	REMARKS
				Q'TY INCLUDING	PRICE()			
	1	51043 147 42	HOUSING	1				
	2							
	3	51090 117 09	PROTECTOR	2				
	4	335L 0616	FLANGE BOLT	4				
	5	512L 0600	HEXAGON NUT	4				
F	6	36065 180	COVER	1				
F	7	342L 0612	FLANGE TAPPING BOLT	2				
	8	36065 436	COVER	1				
F	9	342L 0612	FLANGE TAPPING BOLT	3				
	10	11006 155	STAY C.P.	1				
F	11	342L 0612	FLANGE TAPPING BOLT	2				
	12	11113 407	STAY	1				
F	13	342L 0612	FLANGE TAPPING BOLT	1				
	14	11113 292	STAY	1				
F	15	342L 0612	FLANGE TAPPING BOLT	2				
	16	36068 196 46	GUARD	1				
	17	36080 149	RUBBER SHEET	1				
	18	64014 324	SHAFT	1				
	19	68013 336	SPRING	1				
F	20	71082 111	FAN ASS'Y	1				
	21	51125 103	FAN	1				
	22	11102 151	HOLDER	1				
	23	31062 169	PRE-COAT LOCK BOLT	4				
	24	579L 0600	FLANGE NUT	4				
	25	61024 208	SPACER	1				
	26	91014 159	BLADE	1				
	27	31057 197	HEXAGON BOLT	2				
	28	31057 243	HEXAGON BOLT	4				



PARTS LIST

46014-234-03

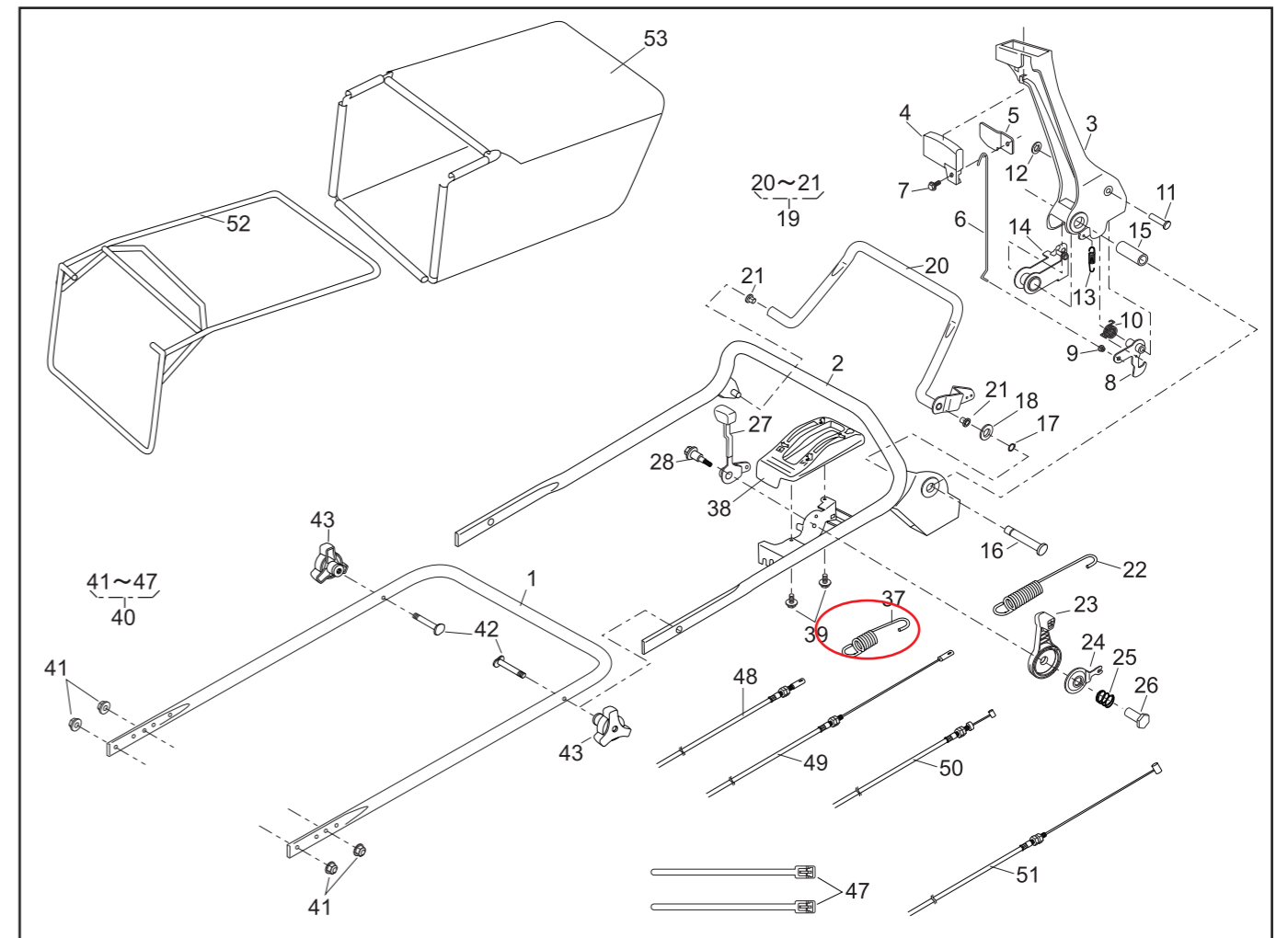
NOTE	REF. No.	PARTS No.	PARTS NAME	GRASS-CUTTING		2/2	Feb.09,2005	REMARKS
				Q'TY INCLUDING	PRICE()			
	29	61024 142	SPACER	3				
F	30	71067 106	BRAKE ASS'Y	1				
	31	31057 196	HEXAGON BOLT	1				
F	32	671V 1000	SPRING WASHER	1				
	33	91097 101	UNIVERSAL JOINT	1				
F	34	812V 2000	C-SNAP RING	1				
	35	717B 0418	PARALLEL PIN	1				
	36	64014 358	SHAFT	1				
A/Z	37	91049 135	CONNECTOR	1				
	38	68036 280	WASHER	1				
	39	816V 0800	E-SNAP RING	1				
	40	36065 438	COVER	1				
F	41	342L 0616	FLANGE TAPPING BOLT	1				
	42	51116 149	HANDLE BRACKET(L)	1				
	43	51116 150	HANDLE BRACKET(R)	1				
	44	31057 255	HEXAGON BOLT	4				
	45	512L 0800	HEXAGON NUT	4				
	46							
	47							
	48							
	49							
F	50	71008 275	GEAR CASE ASS'Y	1				
	51	36046 118	SAFETY GUARD	1				
	52	11012 126	HANGER BAND	2				
	53							
A/Z	54	335L 0616	FLANGE BOLT	2				
	55	122039	ENGINE:HONDA GXV160H2-SFL1-R280	1				
	56		WOODRUFF KEY	1				



PARTS LIST

46014-248-01

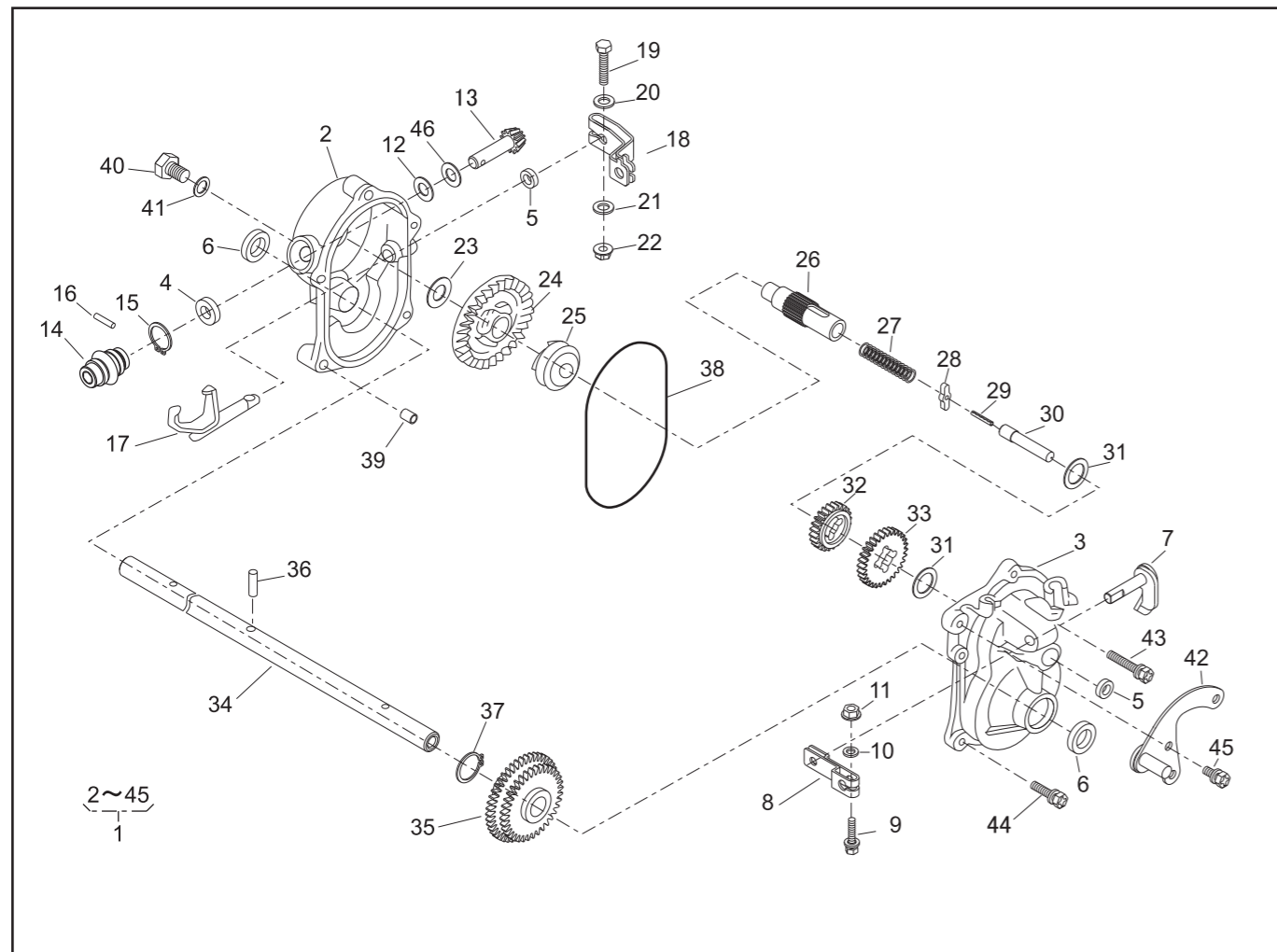
NOTE	REF. No.	PARTS No.	PARTS NAME	HANDLE		1/2	Feb.08,2005	REMARKS
				Q'TY INCLUDING	PRICE()			
	1	51027 254	HANDLE	1				
	2	51027 255	HANDLE	1				
	3	11095 172	LEVER (BBC)	1				
	4	36110 102	BUTTON	1				
	5	11049 109	SLIDE PLATE	1				
	6	64014 336	SHAFT	1				
	7	335N 0612	FLANGE BOLT	1				
	8	71203 135	ARM C.P.	1				
	9	76007 183	BUSH	1				
	10	68013 371	SPRING	1				
	11	31056 127	GIB-HEADED PIN	1				
	12	576V 0600	PUSH NUT	1				
	13	68013 372	SPRING	1				
	14	11109 111	LINK	1				
	15	61023 190	SLEEVE	1				
	16	64014 337	SHAFT	1				
F	17	812V 0800	C-SNAP RING	1				
F	18	613L 0800	PLAINE WASHER	1				
F	19	71161 114 09	LEVER ASS'Y	1				
	20		LEVER	1				
	21	76007 131	BUSH	2				
	22	68013 374	SPRING	1				
	23	91010 169	THROTTLE LEVER (GXV120/GXV160)	1				
	24	61003 113	THRUST PLATE	1				
	25	68013 356	SPRING	1				
F	26	31058 168	HEXAGON NUT	1				
	27	11095 117	LEVER	1				
	28	31062 109	PRE-COAT LOCK BOLT	1				



PARTS LIST

46014-248-01

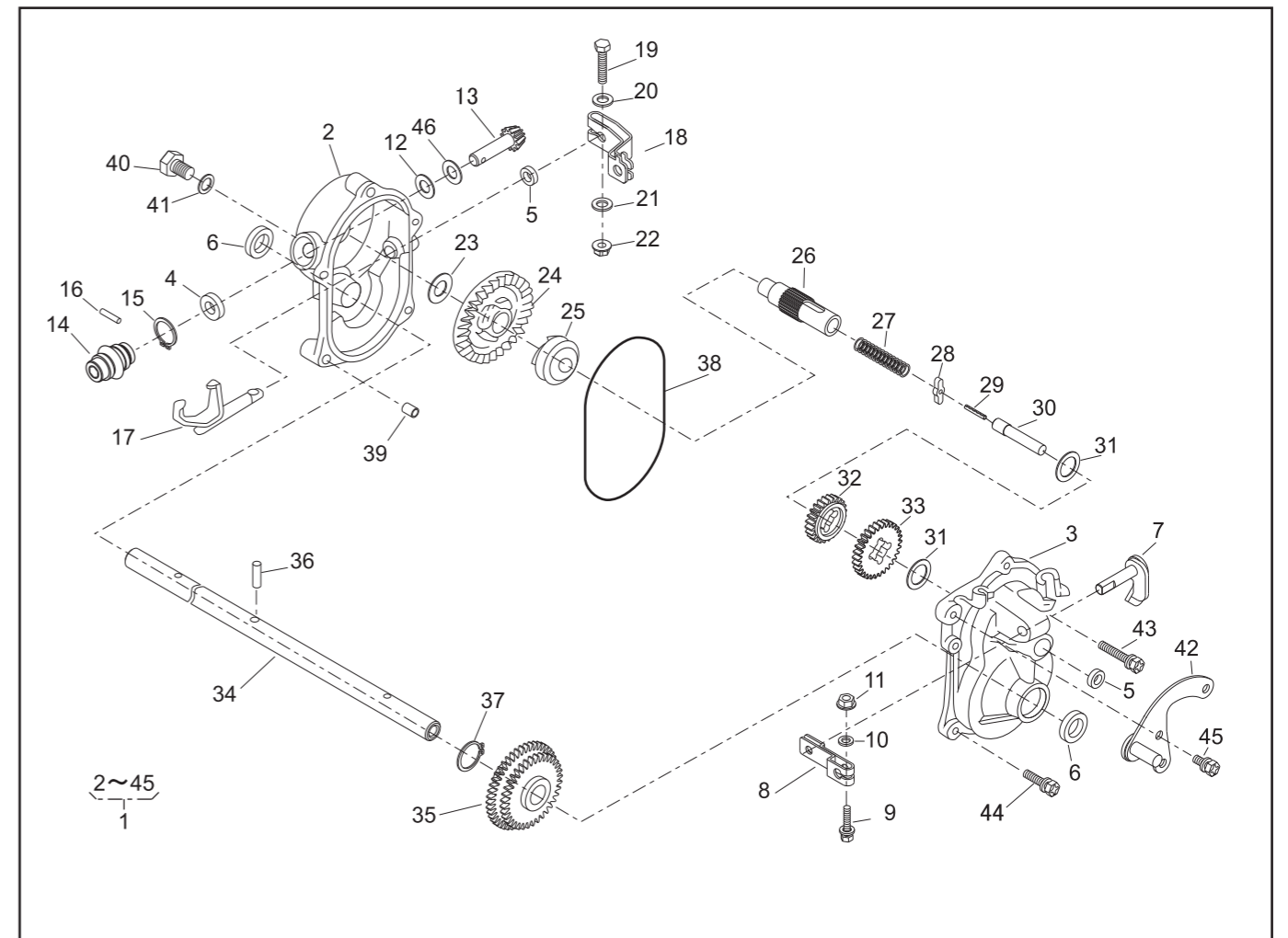
NOTE	REF. No.	PARTS No.	PARTS NAME	HANDLE		2/2	Feb.08,2005	REMARKS
				Q'TY INCLUDING	PRICE()			
	29							
	30							
	31							
	32							
	33							
	34							
	35							
Z	36							
F	37	68013 161	SPRING	1				
	38	71900 796	COVER ASS'Y	1				
	39	470L 0514	(+)TAPPING SCREW	2				
	40	71900 895	BOLT SET	1				
	41	569L 0800	FLANGE NYLON NUT	4				
F	42	31057 134	HEXAGON BOLT	2				
	43	36061 118	KNOB	2				
	44							
	45							
	46							
	47	68028 103	WIRE BAND	2				
	48	91003 125	CONTROL CABLE	1				
	49	91003 170	CONTROL CABLE	1				
	50	91001 329	THROTTLE WIRE (GXV120/GXV160)	1				
	51	91003 169	CONTROL CABLE (BBC)	1				
	52	11062 178	FRAME C.P.	1				
	53	36098 132	GRASS BAG C.P. (KAAZ)	1				
	54							
	55							
	56							



PARTS LIST
GEAR CASE ASSY (71008-275)

46014-262-03

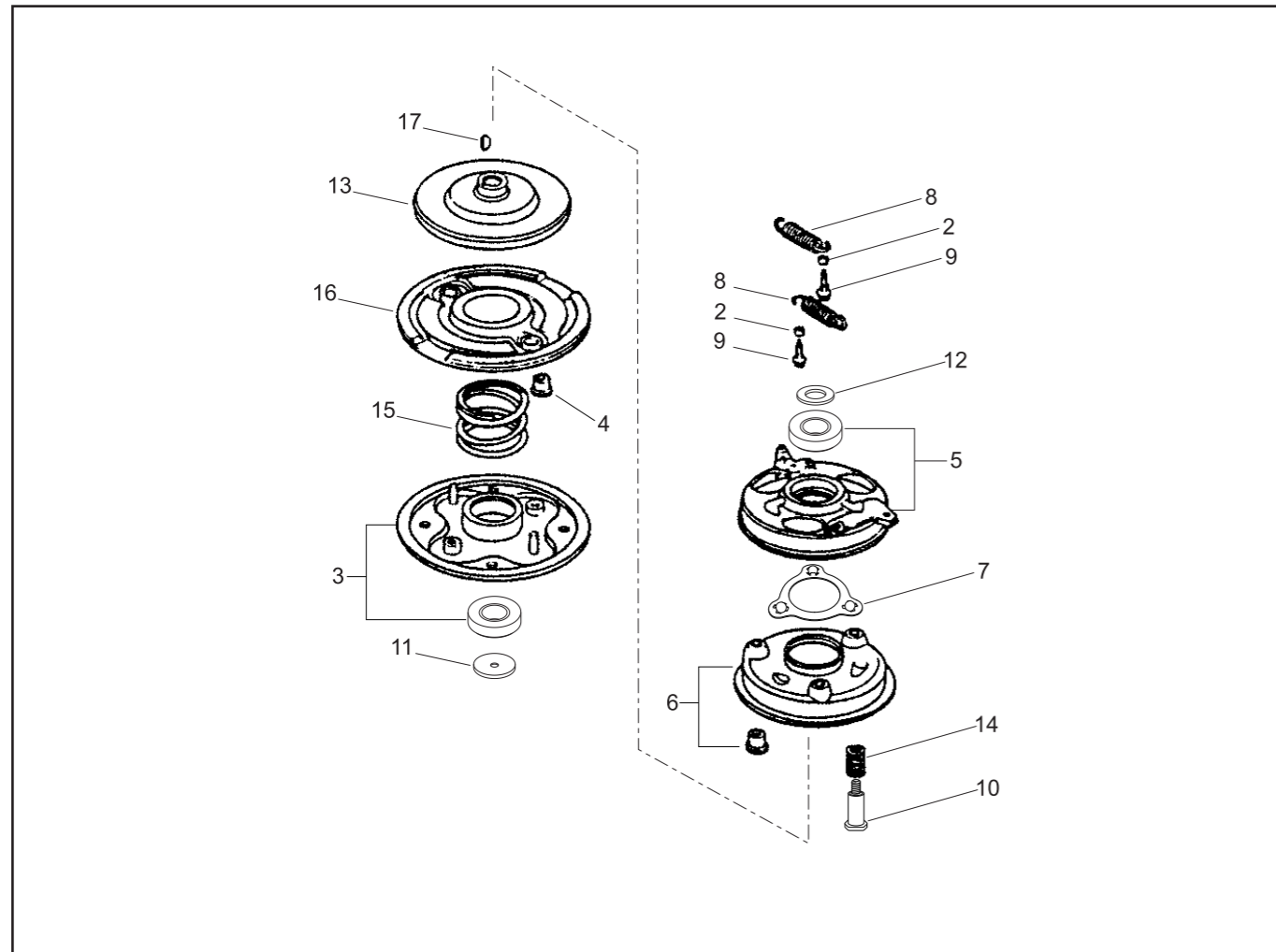
NOTE	REF. No.	PARTS No.	PARTS NAME	GEAR CASE		1/2		Feb.07,2005	
				Q'TY INCLUDING	PRICE()	RECOMM.(%) Lot.100	REMARKS		
	1	71008 275	GEAR CASE ASSY	1		-			
	2	51001 195	GEAR CASE	1		3			
	3	51001 196	GEAR CASE	1		3			
	4	61002 161	OIL SEAL	1		5			SD 10 20 5
	5	61002 162	OIL SEAL	2		5			SD 8 14 4
	6	61002 163	OIL SEAL	2		5			SD 15 24 5
F	7	64024 104	SHIFTER SHAFT	1		3			
	8	11104 119	ARM	1		3			
F	9	320L 0525	(+)HEXAGON BOLT(W/PW)	1		3			M5×25
	10	611L 0500	PLAIN WASHER	1		3			M5
	11	571L 0500	FLANGE NUT	1		3			M5
	12	61003 109	THRUST PLATE	1		5			
	13	78003 130	PINION	1		3			
	14	91097 101	UNIVERSAL JOINT	1		3			
F	15	812V 2000	C-SNAP RING	1		1			φ20
	16	717B 0418	PARALLEL PIN	1		3			φ4×18
E	17	11097 106	SHIFTER FORK	1		3			
	18	11104 137	ARM	1		3			
F	19	311M 0630	HEXAGON BOLT	1		3			M6×30
	20	611L 0600	PLAIN WASHER	1		3			M6
	21	613L 0600	PLAIN WASHER	1		3			M6
	22	571L 0600	FLANGE NUT	1		3			M6
	23	61024 117	SPACER	1		5			
	24	78001 162	BEVEL GEAR	1		3			
	25	11129 107	CLUTCH	1		3			
	26	64014 236	SHAFT	1		3			
	27	68013 262	SPRING	1		3			



PARTS LIST
GEAR CASE ASSY (71008-275)

46014-262-03

NOTE	REF. No.	PARTS No.	PARTS NAME	GEAR CASE		2/2		Feb.07,2005	
				Q'TY INCLUDING	PRICE()	RECOMM.(%) Lot.100	REMARKS		
	28	31034 171	PIN	1		3			
	29	736U 0320	SPRING PIN	1		3			
	30	64014 235	SHAFT	1		3			
	31	61024 118	SPACER	2		3			
	32	78004 156	GEAR	1		3			
	33	78004 155	GEAR	1		3			
	34	64014 163	SHAFT	1		3			
	35	78012 107	GEAR C.P.	1		3			
F	36	31034 150	PIN	1		3			
	37	812V 2200	C-SNAP RING	1		1			φ22
	38	214B 11000	O-RING	1		5			§110
	39	11083 201	COLLAR	2		5			
	40	31057 262	HEXAGON BOLT	1		3			M10×1.25
	41	68001 110	FIBER WASHER	1		3			
	42	11006 101	STAY C.P.	1		5			
F	43	315L 0625	(+)HEXAGON BOLT(W/SW,PW)	3		3			M6×25
	44	315L 0635	(+)HEXAGON BOLT(W/SW,PW)	2		3			M6×35
F	45	318L 0612	(+)HEXAGON BOLT(W/SW)	1		3			M6×12
	46	68007 132	SHIM	0~2		3			



PARTS LIST

BRAKE ASSY (71067-106)

46014-266-01

NOTE	REF. No.	PARTS No.	PARTS NAME	BBC		1/1		REMARKS
				Q'TY INCLUDING	PRICE()	RECOMM.(%) Lot.100		
F	1	71067 106	BRAKE ASS'Y	1		-		
	2	19512 883 000	FAN COLLAR	2		-		
F	3	72600 VA4 010	HOLDER ASS'Y	1		3		
F	4	72613 VA4 000	BUSH, BLADE HOLDER	2		5		
F	5	75090 VA4 030	CONTROL ASS'Y	1		10		
	6	75100 VA4 010	BRAKE C.P.	1		3		
	7	75110 VA4 000	BALL RETAINER C.P.	1		10		
F	8	75182 VA3 J00	SPRING, CLUTCH RETURN	2		5		
I/W	9	90014 952 000	FLANGE BOLT	2		3		6 x 14
F/ W	10	90021 VA4 000	BOLT, SPECIAL	3		3		6 mm
W	11	90409 952 000	WASHER	1		3		10 mm
	12	90501 952 010	THRUST WASHER	1		3		
F	13	75130 VA4 000	BRAKE DISK	1		3		
F	14	75132 VA4 000	SPRING, BRAKE HOLDER	3		5		
F	15	75183 VA3 J00	SPRING, CLUTCH	1		3		
	16	75150 VA3 J01	DRIVEN DISK C.P.	1		3		
F	17	94401 16150	WOODRUFF KEY	1		15		
	18							
	19							
	20							
	21							
	22							
	23							
	24							
	25							
	26							
	27							
	28							